

# hner

August - September 2015

# Design

The International Digital Magazine of:  
Architecture - Interior Design - Furniture & More....

N°9

**PAGHERA:  
KING ABDULLAH  
INTERNATIONAL GARDENS**

**KETTAL BOMA COLLECTION BY:  
RODOLFO DORDONI**

**MICHEL BOUCQUILLON  
WINNER OF STONE EXPO AWARD 2015**

**NEW PRODUCTS BY INTERNATIONAL DESIGNERS**





Paghera: King Abdullah International Gardens.  
Photo: © Fabio Luciani.

*Inner Design: A Lebanese digital magazine of interior architecture, furniture & more and more...*

**Publisher**  
& **Editor-in-Chief:** Elias N. Salamé  
**Editor:** Nelly Khoury  
**Contributing Editor:** Francesca Minosotti

**Creative Art Director:** Elias N. Salamé  
**Editorial Office:** innerdesignmag@yahoo.com  
**Advertising:** eliasn.salame@gmail.com

**Inner Design Magazine**  
Tel: 00 961 3 48 36 63  
P.O.Box: 1709 Jounieh - Keserwan - Lebanon

<http://innerdesignmag.blogspot.com>  
(under-construction)  
[www.facebook.com/InnerDesignmagazine](http://www.facebook.com/InnerDesignmagazine)

©Inner Design 2015: All rights reserved. Nothing in this publication may be copied or reproduced without prior written permission of the publisher.

### *Some words from the publisher.*

*After few months of publishing the eight issue of INNER DESIGN, and following a rest period after illness, I come back to publish the ninth issue of them.*

*At first, I would like to present my apologies to our readers, architects, interior designers, advertisers and especially to Rosa Aznar (KETTAL GROUP, Spain), Gaia Di Palma (DI PALMA ASSOCIATI, Italy) and Mariana Fredes (LG HAUSYS, Switzerland) for this delay to publish it.*

*In this issue, you will find what you like, new designs from around the world by famous designers as Zaha Hadid, Marcel Wanders, Peter Zumthor, Gabriele Chiave, Rodolfo Dordoni, Lydia Brodde and more...*

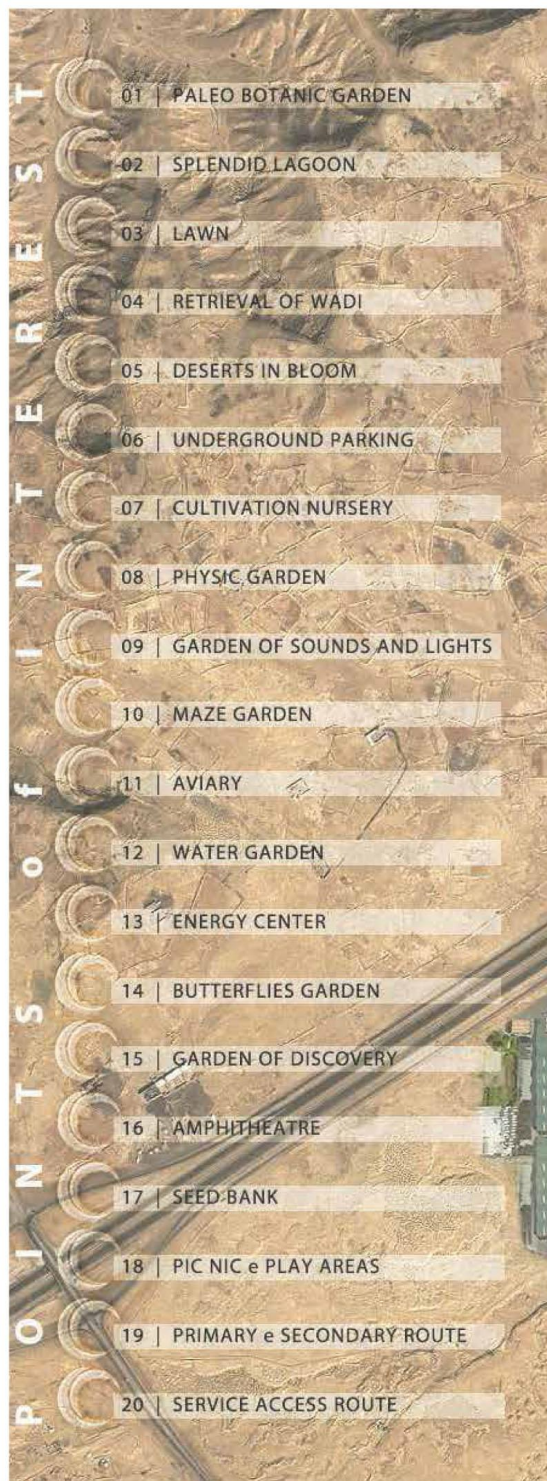
*Moreover, you will discover the King Abdallah International Garden in Saudi-Arabia, the Kettal Boma Collection by Rodolfo Dordoni, and the Town Hall of Almere in the Netherlands....*

*Finally, I wish you a happy Summer Vacation full of joy and health of course.*

*Elias N. SALAME*

## ■ ARCHI SPACE

WELL OVER HALF OF THE VAST COUNTRY OF SAUDI ARABIA IS DESERT. THE NEFUD DESERT IN THE NORTH IS LINKED TO THE RUB' AL-KHALI DESERT IN THE SOUTH BY THE SAND DUNES OF YET ANOTHER DESERT, THE AD-DAHNA. IN THE CENTRE, ON A VAST HIGHLAND PLATEAU JUST BEYOND THE DUNES, IS THE CAPITAL RIYADH. THE TROPIC OF CANCER RUNS THROUGH SAUDI ARABIA AND THERE IS A PREVAILING DESERT CLIMATE, WITH TEMPERATURES RANGING FROM 40°C TO 50°C IN SUMMER AND 5°C TO 15°C IN WINTER. THIS IS THE SETTING FOR A DARINGLY COMPLEX PROJECT TO CREATE A HUGE BOTANICAL GARDEN JUST A STONE'S THROW FROM THE CAPITAL.



© Fabio Luciani.

# PAGHERA: KING ABDULLAH INTO THE HISTORY OF OUR PLANI



# KING Abdullah International Gardens



# INTERNATIONAL GARDENS SET IN A BOTANICAL GARDEN





## PAGHERA TAKES ON A NEW CHALLENGE IN THE WORLD'S DRIEST DESERT AT RIYADH.

The project plans to conjure up a park of over 2,200,000 m<sup>2</sup> with plants from all over the world, including examples of extinct species and those that have survived evolution and climate shifts. This unusual garden is intended as a gift from the city of *Riyadh to the Saudi King Abdullah*, and it will also represent a powerful tool for learning about, and understanding, the origins and consequences of climate change and the transformations the world's ecosystems undergo. It will help think about the choices we will face in the future and how we can effectively foster sustainable development. The heart of the park will be two intersecting

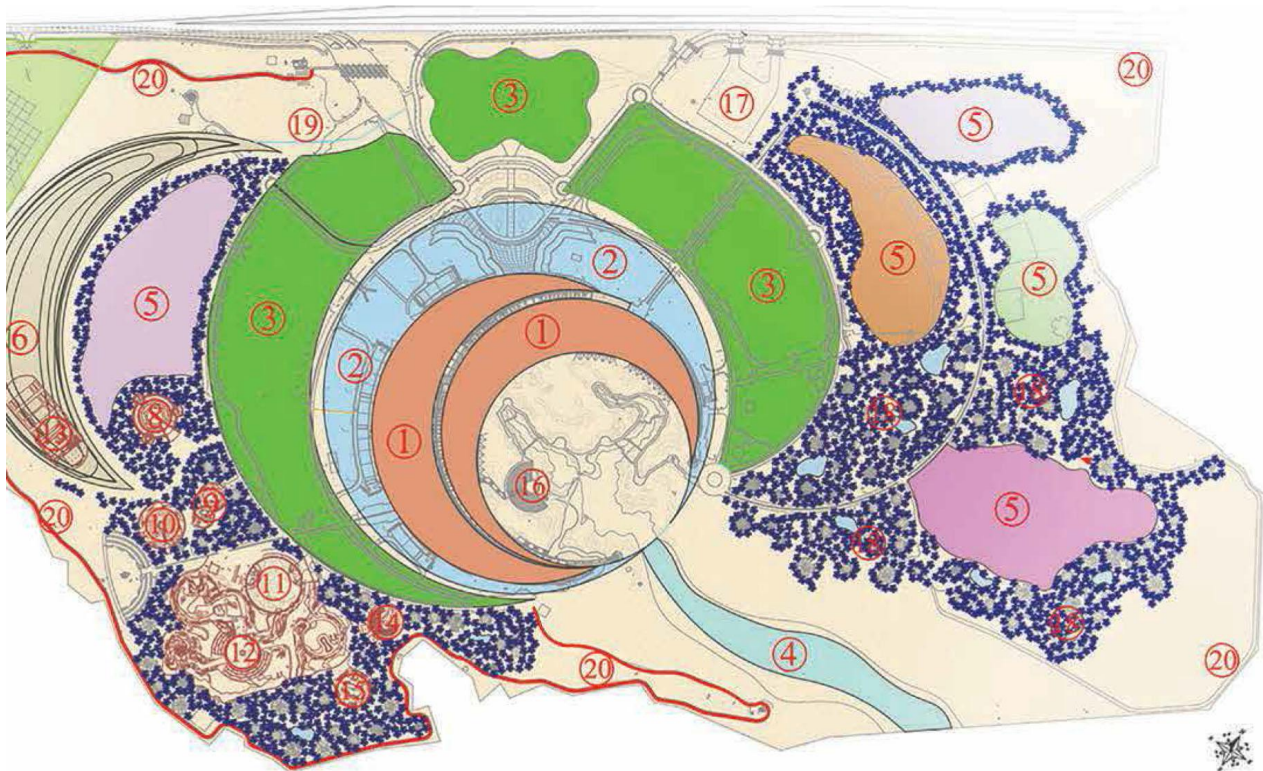
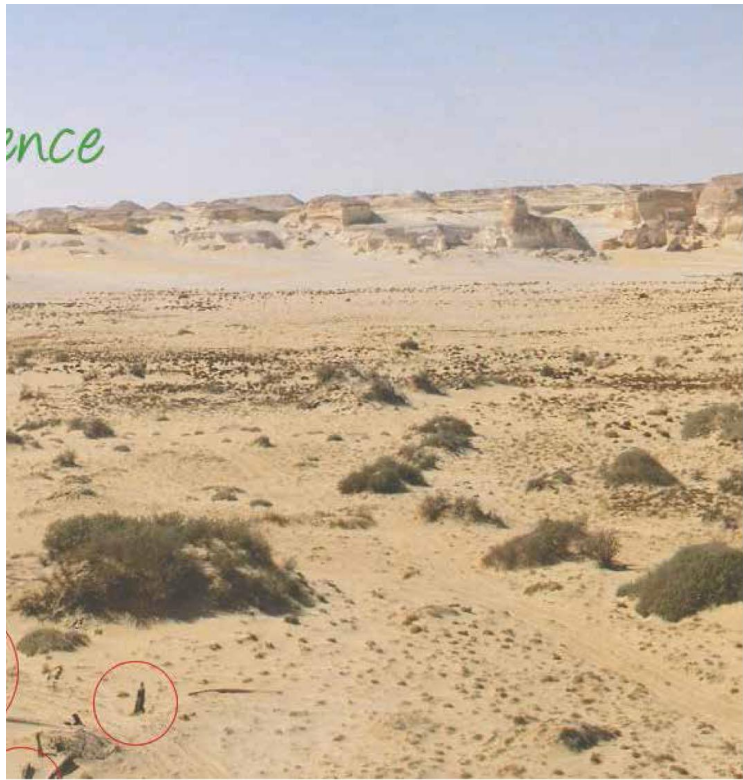
crescent moons housing various pre-historic ecosystems. It may seem strange today, but *Saudi Arabia's* swathes of burning deserts were once covered millions and millions of years ago with vast stretches of Savannah-like grasslands enjoying abundant rainfall feeding a network of rivers which flowed all year round and harboured crocodiles and herbivorous dinosaurs.

### THE PAGHERA TOUCH

*Paghera* reviewed the landscaping, together with some other aspects of the project, in its final stages of definition, and decided to soften the



- ① PLANTING OF ALL PLANTS AND TREES
- ② ALL LAWNS
- ③ LAWN
- ④ RETRIEVAL OF WASH
- ⑤ DESIGN IN BLOCK
- ⑥ UNDERGROUND PARKING AND EXITS
- ⑦ ALL EDUCATION NEIGHBORHOOD
- ⑧ PHYSIC GARDEN
- ⑨ GARDEN OF SOUND & LIGHT
- ⑩ HAZE GARDEN
- ⑪ SUARY GARDEN
- ⑫ WATER GARDEN
- ⑬ ENERGY CENTER
- ⑭ BUTTERFLY GARDEN
- ⑮ GARDEN OF DIVERSITY
- ⑯ LANDSCAPE
- ⑰ BEED BANK
- ⑱ PUNCH PLAY AREA
- ⑳ PRIMARY AND SECONDARY BIRTH
- ㉑ GREEN NOVA BIRTH



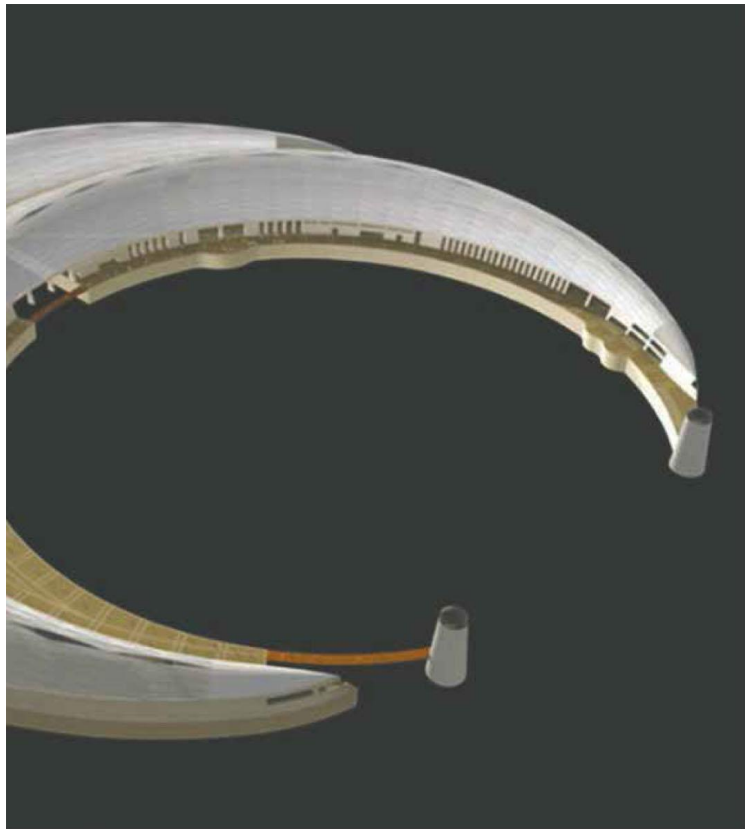




rather stark, regular lines of its original design. Looking beyond the rules establishing that the trees and plants are to be arranged in orderly rows and regular intervals, *Paghera* felt the importance of establishing a stronger link with the site and its surroundings, of respecting its original settings, and believed that the key lay in creating an oasis, one of the largest in the world. The 4000-space car park, originally planned as a standard, open-air parking lot, was moved underground beneath an artificial dune overlooking the park. The 50 metre-high dune will house a luxury hotel, reminiscent in style to the desert castles that were

once home to the aristocracy under the caliphs. The hotel terraces will host restaurants organised under traditional *Arab* tents, evocative of Tuareg camps, with stunning views over the crescent moons and surrounding park. The dune itself will be surrounded by a sea of splendid flowering meadows planted with species from some of the harshest deserts in the world, most of them succulents, which are used to extreme climates and are able to withstand extremely high temperatures and long periods of drought. Looking up, the park can also be admired from the air, via a 6 km-long system of air-conditioned cable cars offer-

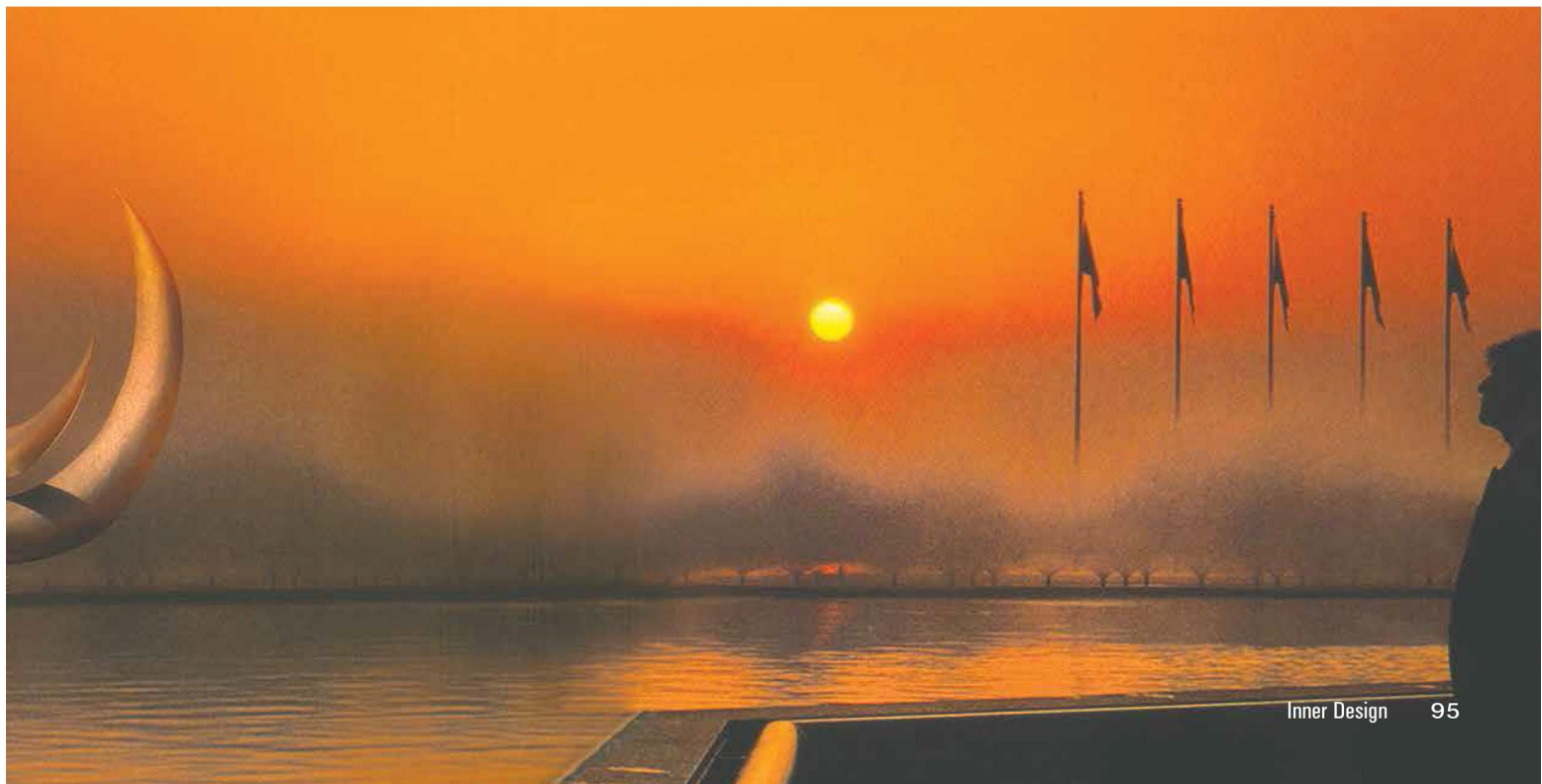
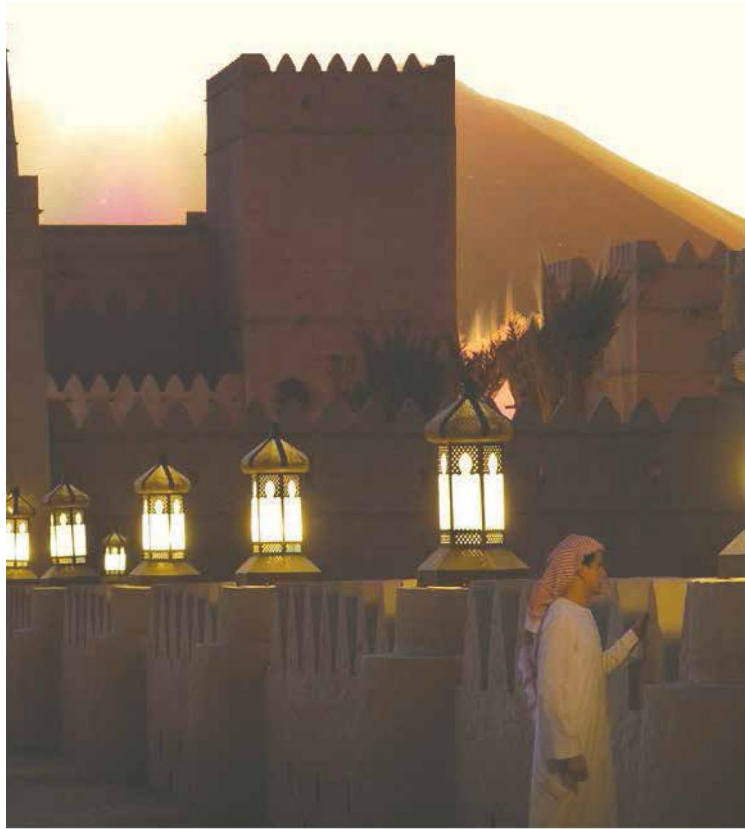












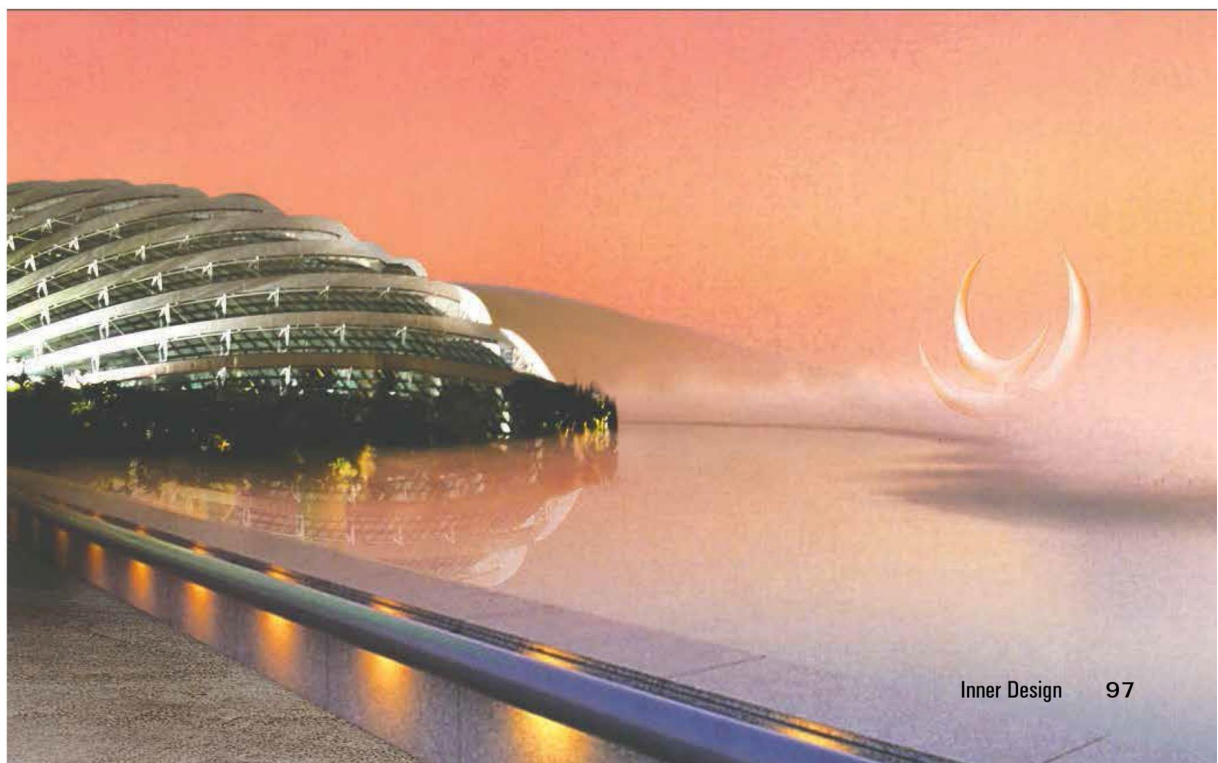




ing a complete tour with stop off observation points. Set like a jewel as the centrepiece of the two crescent moons will be the *Wadi Garden*, created in the bed of an erstwhile stream whose waters have scoured a deep depression in the terrain. The river will be resurrected thanks to artificial rain and the recycling of rainwater and water from artisan wells. A system of oases will be created along the course of the river, providing pathways flanking a series of small lakes, waterfalls and luxuriant greenery, an earthly paradise in the desert to be enjoyed either on foot

or using golf carts. The huge garden will host a number of pavilions, which will be used together with the two crescent moons to showcase the plants, trees and flowers gathered from all four corners of the globe. Nearby are 150,000 m<sup>2</sup> of greenhouses where native species will be cultivated. A 6450 m<sup>2</sup> aviary provides an opportunity to study and observe exotic species of birds in a tropical rainforest habitat, preserving an environment that is fast disappearing in other parts of the world thanks to indiscriminate logging. Then there is a butterfly garden of al-

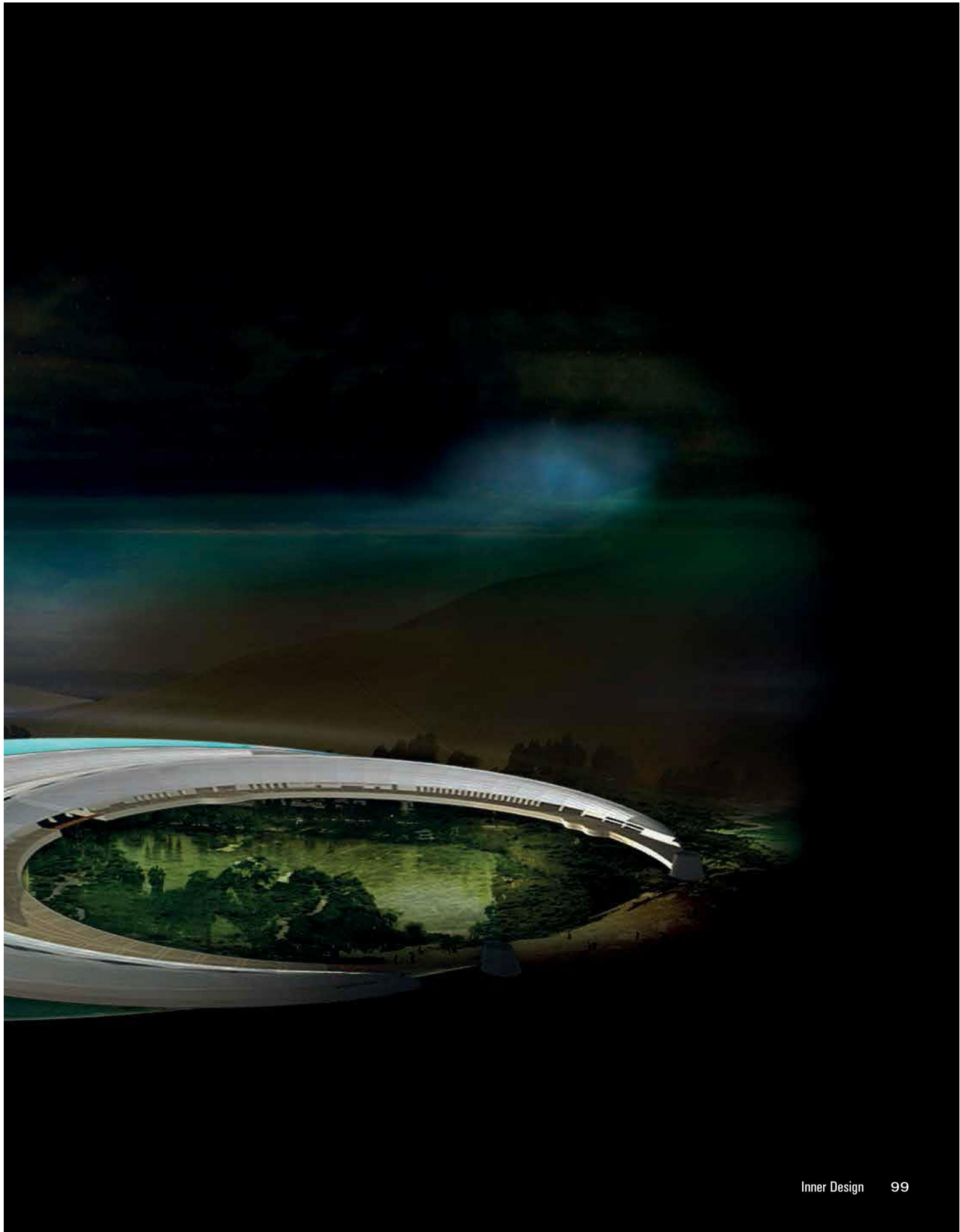
















most 5000 m<sup>2</sup>, divided into two different habitats: an exotic habitat with tropical vegetation kept at a constant temperature of between 21°C and 29°C and another one with native butterflies, trees and bushes. Among the other attractions is a physic garden, a pavilion exclusively for medicinal plants and herbs from all over the world, and a water garden with a study of water in all its forms, from ice to snow and steam. Lastly there is a maze garden with a large spherical fountain at its centre. Not far away is the seed bank which will stock seed from our planet's plants and flowers. This enchanted, futuristic botanical garden, constructed using cutting edge technologies from nothing in the middle of the desert, has all the potential to become both a valid scientific centre and a popular tourist attraction.







A sort of green, eco-sustainable theme park where visitors can discover nature on a planetary level and find out how to safeguard our environment for future generations. **ID**

